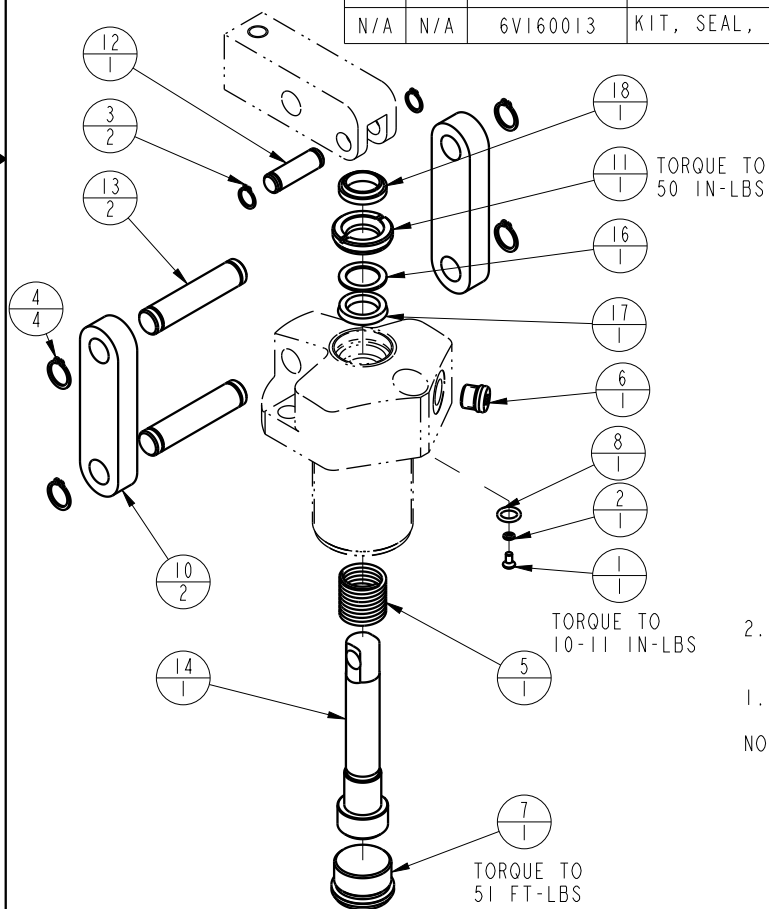



| MODEL NO. | | | MODEL NAME | | |
|-----------|-----|----------|-------------------------------|--------------|--------------|
| 16610900 | | | ASSY, LC, SA, 1300 | | |
| NO. | QTY | PART NO. | DESCRIPTION | STD SEAL KIT | FKM SEAL KIT |
| 1 | 1 | 21500019 | SCREW, CAP, BTNH, M3 X 6, ALY | | |
| 2 | 1 | 21500200 | WASHER | | |
| 3 | 2 | 23050022 | RING, RTNG, EXT, 0.375 | X | X |
| 4 | 4 | 23050023 | RING, RTNG, EXT, 0.500 | X | X |
| 5 | 1 | 23350050 | SPRING, COMPRESSION | | |
| 6 | 1 | 30601144 | PLUG, SOCH, SAE 4 | | |
| 7 | 1 | 30670003 | PLUG, SAE 12, FKM | X | X |
| 8 | 1 | 39050042 | O-RING, (-011) | X | 39051025 |
| 9 | 1 | 67040065 | TAG, LINK ASSY, LC | | |
| 10 | 2 | 81600023 | LINK, LC, 2600 1b | | |
| 11 | 1 | 81600038 | RETAINER, LC, 2600 | | |
| 12 | 1 | 81600078 | PIN, LC, SHORT, 2600 | | |
| 13 | 2 | 81600083 | PIN, LC, LONG, 2600 | | |
| 14 | 1 | 81600114 | PLUNGER, LC, SA, 1300/6 KN | | |
| 16 | 1 | 39F54001 | BU RING, (-208 CUSTOM) | X | X |
| 17 | 1 | 39H52041 | SEAL, BEVEL, 5/8 x 1/8 x 7/8 | X | 39V52033 |
| 18 | 1 | 39V53027 | WIPER, SNAP-IN, (5/8) | X | X |
| N/A | N/A | 60160013 | KIT, SEAL, LC, SA, 1300 | NOTED | |
| N/A | N/A | 6V160013 | KIT, SEAL, LC, SA, 1300, FKM | | NOTED |



2. ALL SEALS, BU RINGS, RETAINING RINGS, O-RINGS, AND PLUGS ARE INCLUDED IN THE SEAL KIT.
1. APPLY LUBRICANT TO ALL SEALS PRIOR TO ASSEMBLY.

NOTE:

| | | |
|-------------------|---|--------------------------|
| PARTS LIST |  VEKTEK, INC. 1334 E. SIXTH AVE. P.O. BOX 625 EMPORIA, KS. 66801 U.S.A. | |
| | ASSEMBLIES AFFECTED | PARTS LIST, LC, SA, 1300 |
| 16610900 | SIZE A | REV C |

| | | | | |
|---------|------------------------|--|------------|--------|
| C | 5718 | RELEASE | NPETERS | 6/9/25 |
| REV | IN ACCORDANCE WITH ECN | EFFECTIVE DATE | REVISED BY | DATE |
| DRW BY: | K. ROEMER | DRAWING STATUS: Released | | |
| DATE: | 07/30/04 | PRODUCTION APPROVED FOR RELEASED STATUS ONLY | | |